



“Selexic Pay” Empower. Engage. Excel.

***Your Comprehensive Labor
Management ERP***



Efficiency, Transparency, Control

In an ever-changing landscape where efficient labor management holds the key to success, Selexic Pay emerges as your partner for navigating the intricacies of modern workforce dynamics. As projects grow in complexity and the workforce becomes more diverse, the demand for a streamlined approach to labor contractor management application has never been greater.

Selexic Pay is your answer, offering a holistic solution that encompasses the core aspects of labor management. From client interactions and employee administration to attendance tracking, salary processing, and government compliance, Selexic Pay redefines how you manage your labor ecosystem.



Addressing Labor Contractor Challenges with Precision

Navigating the complexities of labor contractor management can be a daunting task. Selexic Pay rises to the challenge, offering a comprehensive solution that directly addresses the pain points faced by organizations.



Company Billing

Managing billing for labor contractors often involves manual calculations, leading to errors and delayed payments. Selexic Pay automates the billing process, ensuring accurate calculations based on employee work hours and rates. This not only reduces errors but also speeds up the billing cycle, leading to timely and efficient payments.

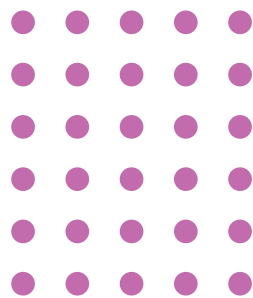
Attendance and Salary

Keeping track of Employee attendance and managing salary processing can be time-consuming and prone to errors. Selexic Pay's intuitive platform allows you to effortlessly monitor Employee attendance in real-time. This data seamlessly integrates with salary processing, ensuring that accurate wages are calculated and disbursed promptly, enhancing contractor satisfaction and trust.



Government Compliance

Navigating labor laws and government compliance can be a labyrinthine challenge. Selexic Pay takes the complexity out of compliance by automating the tracking of contractor records and certifications. This ensures that your organization remains aligned with legal requirements, minimizing the risk of non-compliance and potential penalties.



Efficient Employee Management

Managing a diverse workforce of labor contractors requires streamlined processes. Selexic Pay's employee management feature centralizes crucial employee information, from onboarding to offboarding. This ensures a consistent and efficient approach, reducing administrative burdens and fostering a seamless experience for both contractors and your HR team.



Selexic Pay isn't just software; it's your strategic ally in overcoming labor contractor management challenges. With features designed to enhance billing accuracy, optimize attendance and salary processing, ensure government compliance, and streamline employee management, Selexic Pay empowers you to navigate the labor landscape with confidence. Welcome to a future where efficiency meets precision, and challenges are met with solutions.

The Selexic Pay Advantage

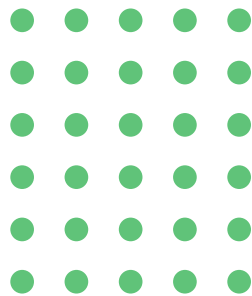
Empowering Labor Contractors for Business Growth with Selexic Pay

Selexic Pay isn't just a software; it's a growth catalyst for labor contractors seeking to thrive in a competitive landscape. Here's how Selexic Pay empowers labor contractors to fuel their business growth



Enhanced Efficiency

Streamlined billing, automated attendance tracking, and accurate salary processing reduce manual efforts. This efficiency means labor contractors can focus more on expanding their business and delivering exceptional results



Payment Gateway

Selexic Pay's automated billing ensures contractors receive prompt payments, improving cash flow and providing financial stability for investing in business growth opportunities.



Improved Resource Allocation

Real-time attendance insights enable labor contractors to optimize workforce allocation, ensuring the right skills are deployed to the right projects, enhancing project quality and customer satisfaction.

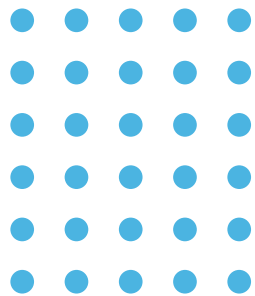
Compliance Confidence

Automated compliance tracking ensures labor contractors operate within legal parameters, mitigating risks and building a reputation for ethical business practices that attract clients.



Scalability Support

Selexic Pay's efficient employee management streamlines expansion efforts. Scaling up the workforce becomes smoother, enabling labor contractors to take on more projects and expand their clientele.



Focus on Strategy

With administrative tasks streamlined, labor contractors have more time to focus on strategic planning, exploring new markets, and nurturing client relationships to foster sustainable growth.



Competitive Edges

Selexic Pay's precise and efficient management differentiates labor contractors in a crowded market, making them an attractive choice for clients seeking reliable partners. From manual tasks, providing timely payments, optimizing resource allocation, ensuring compliance, supporting scalability, and fostering strategic thinking, Selexic Pay propels labor contractors towards achieving sustained business growth and excellence.

Features that Transform

Certainly, here's a combined breakdown of Client Management, Employee Management, Attendance Tracking, and Salary Processing within Selexic Pay



Client Management

Client Registration : Efficiently add and manage client information.

Client Agreements : Store and organize client-specific agreements.

Billing : Automate billing calculations based on services provided.

Payment : Monitor and manage client payment transactions.

Quotation : Generate customized quotations for client projects.



Employee Management

Employee Registration : Add Employees and manage their profiles.

Material Assignment : Assign materials and equipment to labor contractors.

Salary Structure : Predefined basic salary components for accurate payroll.

Financial Transactions : Record advances, loans, damages, losses, and fines.

Letter Management: Generate various Core Hr letters.

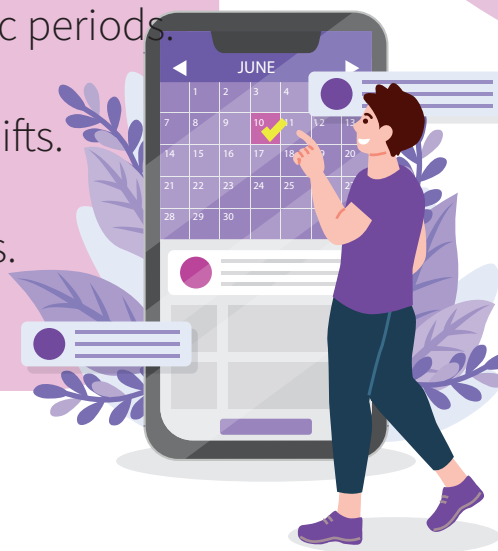
Attendance Tracking

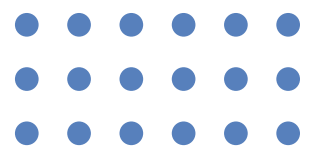
Excel Data Handling : Easily upload and download attendance data.

Muster Creation : Generate attendance muster for specific periods.

Basic Attendance : Record daily attendance and track shifts.

Edit and Approval : Edit and approve attendance records.





Salary Processing

Monthly Salary : Automatically calculate monthly salaries based on attendance.

Salary Slips : Generate individual or bulk salary slips.

Salary Slip Delivery : Deliver salary slips via email and WhatsApp.

Bank Report : Generate reports detailing salary credits.



Selexic Pay integrates these modules to offer a comprehensive solution for efficient labor contractor management, ensuring streamlined processes, accurate payroll, effective attendance tracking, and improved client interactions.

Benefits that Propel

- 1 Efficiency Amplified :** Selexic Pay's automation streamlines processes, saving time and reducing administrative burdens.
- 2 Precision Planning :** Accurate real-time insights enable effective project scheduling and resource allocation.
- 3 Compliance Confidence :** Stay compliant effortlessly with automated tracking of contractor records and certifications.
- 4 Empowered Collaboration :** Improved communication bridges gaps between stakeholders and contractors.
- 5 Data-Driven Decisions :** Analytics and reports offer insights that refine strategies and optimize project outcomes..



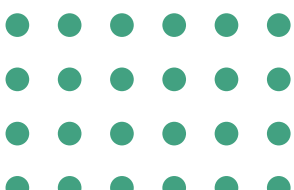
With Selexic Pay, you're equipped with a suite of features that catalyze efficiency, control, and transparency, resulting in empowered labor management and projects that thrive.

Why Choose **Selexic Pay**?

Effortless Management: Bid adieu to manual paperwork and administrative hassles. Selexic Pay automates labor contractor management, allowing you to invest your time where it counts.



Transparency and Compliance: Navigate complex labor regulations with ease. Selexic Pay ensures full compliance and transparent practices, bolstering your reputation and peace of mind.



Schedule a Demo

As you embark on the journey towards a revolutionized approach to labor contractor management, Selexic Pay stands ready to empower your efforts. With a commitment to efficiency, transparency, and control, we offer a solution that not only meets the challenges of today but also paves the way for a more streamlined tomorrow.



97683 97682



enquiry@inforttechnology.com



www.selexichrms.com

